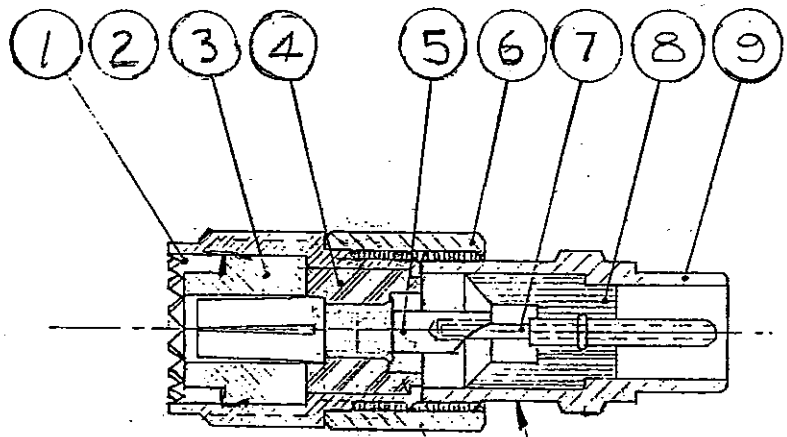


REV.	DATE	DETAILS	INIT.	NAME	DATE	LINK CONNECTORS P/L A GORDON GROUP COMPANY	DRAWING NO.	ISSUE				
A	3-2-92	RELEASED	<i>[Signature]</i>	RWLC	3-2-92	ADAPTOR B75 PLUG TO B80 SOCKET	B70-003	B				
B	15/9/99	New 2 way #11803 circuit	<i>[Signature]</i>			TITLE						
			APPROVED	<i>[Signature]</i>	3-2-92	MATERIAL NOTED	REF. DRGS.					
			MASTER SAMPLE LOCATION			FINISH NOTED	FIRST USE					
GENERAL TOLERANCE UNLESS OTHERWISE SPECIFIED: Two Fig Decimal ± 0.010 * Three Fig Decimal ± 0.005 * Angles ± 1 Degree							SCALE	1:1	2:1	4:1	5:1	10:1

RELEASED FOR PRODUCTION
 APPROVED: *[Signature]*
 DATE: 16.9.99



BRAND LINK B70-003

ADAPTER ASSEMBLY

KEY	PT. NO.	DESCRIPTION	QTY.	KEY	PT. NO.	DESCRIPTION	QTY.
1	11869-2	BODY	1	8	I-193	INSULATOR/PIN ASSY.	1
2				9	11672-2	PLUG BODY (A)	1
3	11868	INSULATOR 'L'	1				
4	12069	INSULATOR	1				
5	12067-1	CONTACT	1				
6	11795	ADAPTOR SLEEVE	1				
7		20 SWG. TINNED COPPER WIRE X $\frac{15}{16}$ L.					

COPYRIGHT RESERVED: THIS DRAWING IS THE SOLE PROPERTY OF LINK CONNECTORS P/L AND IS RETURNABLE ON REQUEST, IS TO BE TREATED AS CONFIDENTIAL, IS NOT TO BE COMMUNICATED TO ANY OTHER PERSON WITHOUT THE WRITTEN CONSENT OF LINK CONNECTORS AND MAY BE USED FOR MANUFACTURE ONLY WHEN ACCOMPANIED BY A WRITTEN ORDER.