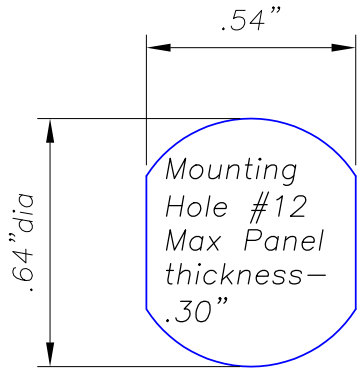
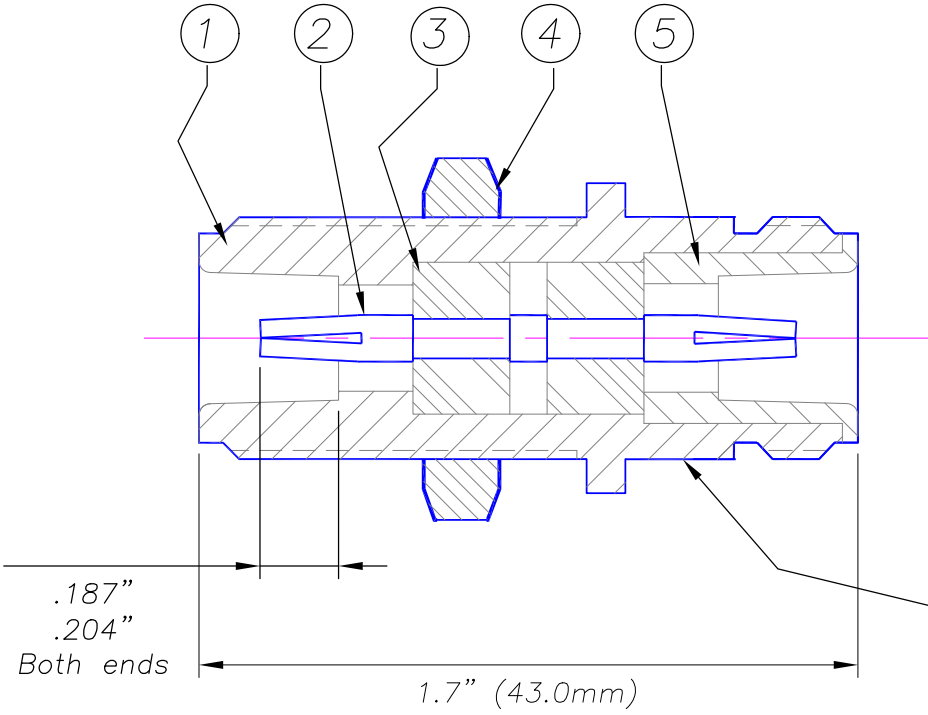


REV	DATE	REVISION DETAILS	INIT	IMPERIAL DIMENSIONS		GORDON TECHNOLOGIES Pty. Ltd.	A GORDON GROUP COMPANY	<i>B30-021</i> DRAWING No. _____ ISSUE <i>D</i> REF. DRGS. _____ FIRST USE: _____ SCALE 2:1
<i>D</i>	<i>.07</i>	<i>Redrawn/Autocad. #4 was 11012-5</i>		NAME	DATE	TITLE		
				<i>kwk</i>	<i>8.5.07</i>	<i>'N' JACK/JACK B/H Mnt. ADAPTOR</i>		
				APPR'VD		MATERIAL <i>NOTED</i>		
						FINISH <i>NOTED</i>		
TOLERANCE UNLESS OTHERWISE SPECIFIED: 2 fig decimal +/- .004" 3 fig decimal +/- .002" Angles +/- 1 deg								



Key	Part No.	DESCRIPTION	Qty.	Material	Finish
1	12411	BODY	1	Brass	Nickel Plate
2	12412	CONTACT D/E	1	Brass	Gold Plate
3	11891-2	INSULATOR	2	PTFE	Natural
4	11012-15	LOCK NUT	1	Brass	Nickel Plate
5	11905	BODY - INNER	1	Brass	Nickel Plate

NOTE! Assemble items 1, 2 & 3 together. Control the position of the Contact & Insulators during assembly.



BRAND - LINK B30-021

COPYRIGHT RESERVED: THIS DRAWING IS THE SOLE PROPERTY OF LINK CONNECTORS P/L & IS RETURNABLE ON REQUEST. IT IS TO BE TREATED AS CONFIDENTIAL, IS NOT TO BE COMMUNICATED TO ANY OTHER PERSON WITHOUT THE WRITTEN CONSENT OF LINK CONNECTORS & MAY BE USED FOR MANUFACTURE, ONLY WHEN ACCOMPANIED BY A WRITTEN ORDER.