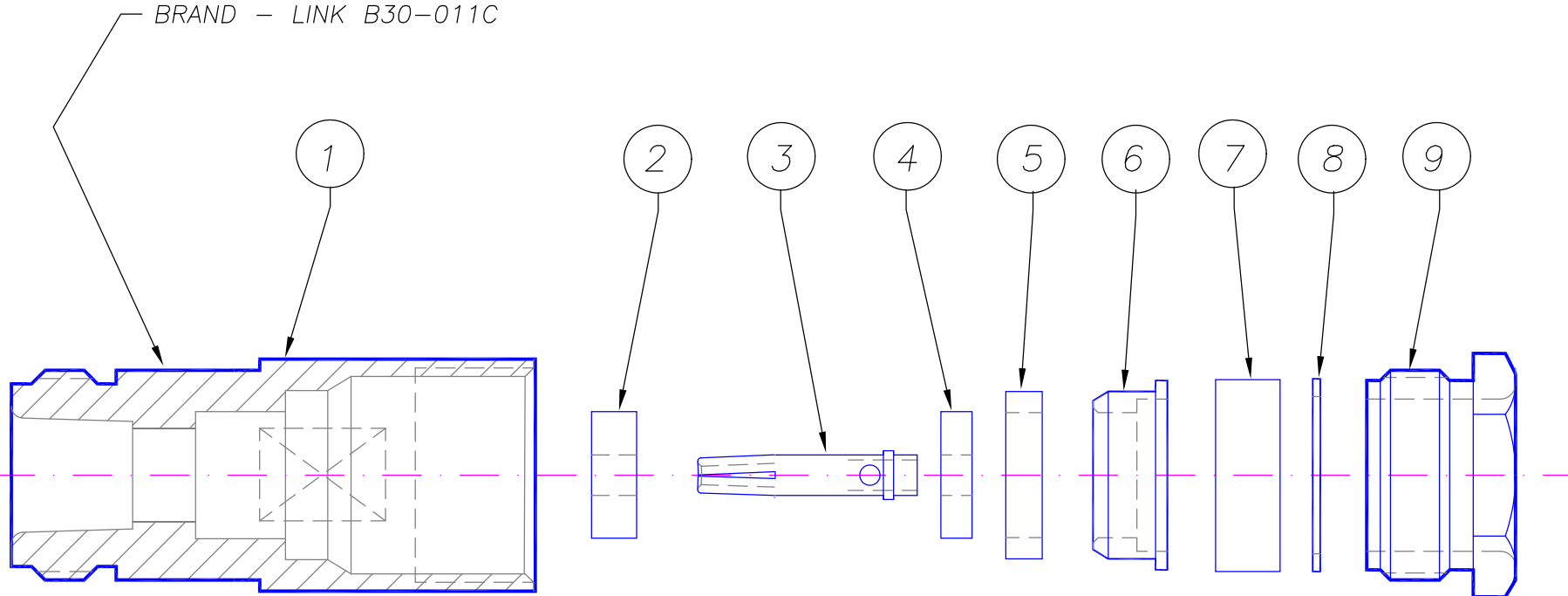


| | | | | | | | | | |
|--|--------|---------------------|------|---------------------|------|-------------------------------|----------------------------------|----------|--------------------------|
| REV | DATE | REVISION DETAILS | INIT | IMPERIAL DIMENSIONS | | GORDON TECHNOLOGIES Pty. Ltd. | A GORDON GROUP COMPANY | B30-011C | |
| B | 1.9.03 | Redrawn in AutoCad. | KWK | NAME | DATE | TITLE | | | DRAWING No. |
| | | | | DRAWN | kwk | 1.9.03 | 'N' CABLE JACK - captive contact | | ISSUE B |
| | | | | APPR'VD | KWK | 1.9.03 | MATERIAL NOTED | | REF. DRGS. SK638, SK2312 |
| | | | | | | | FINISH NOTED | | FIRST USE: |
| TOLERANCE UNLESS OTHERWISE SPECIFIED: 2 fig decimal +/- .004" 3 fig decimal +/- .002" Angles +/- 1 deg | | | | | | | | | |

| Key | Part No. | DESCRIPTION | Qty. | Material | Finish |
|-----|----------|-------------------|------|----------|--------------|
| 1 | 11895 | BODY - Cable Jack | 1 | Brass | Nickel Plate |
| 2 | 12404 | LARGE INSULATOR | 1 | PTFE | Natural |
| 3 | 12403-1 | CAPTIVE CONTACT | 1 | Brass | Gold Plate |
| 4 | 12405 | SMALL INSULATOR | 1 | PTFE | Natural |
| 5 | 12406-1 | RETAINING RING | 1 | Brass | Nickel Plate |
| 6 | 11725-3 | BRAID CONE | 1 | Brass | Nickel Plate |
| 7 | 11728-1 | SEALING RING | 1 | Neoprene | Black |
| 8 | 11726-1 | WASHER | 1 | Brass | Nickel Plate |
| 9 | 11727-3 | CLAMP NUT | 1 | Brass | Nickel Plate |



COPYRIGHT RESERVED: THIS DRAWING IS THE SOLE PROPERTY OF LINK CONNECTORS P/L & IS RETURNABLE ON REQUEST. IT IS TO BE TREATED AS CONFIDENTIAL, IS NOT TO BE COMMUNICATED TO ANY OTHER PERSON WITHOUT THE WRITTEN CONSENT OF LINK CONNECTORS & MAY BE USED FOR MANUFACTURE, ONLY WHEN ACCOMPANIED BY A WRITTEN ORDER.