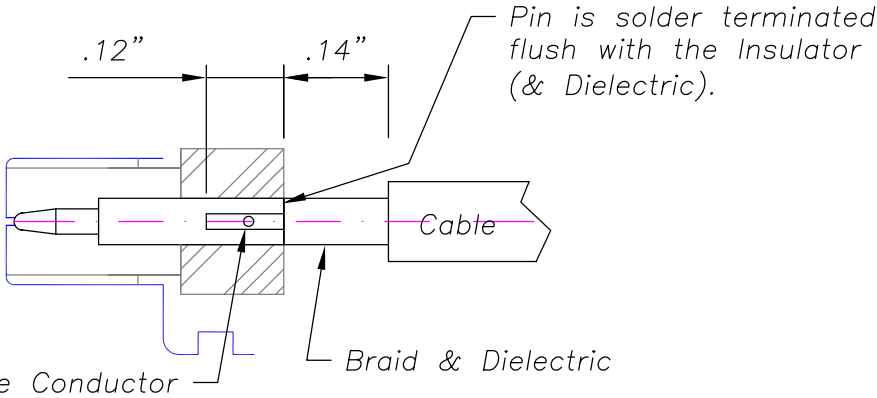


REV	DATE	REVISION DETAILS	INIT	IMPERIAL DIMENSIONS		GORDON TECHNOLOGIES Pty. Ltd. A GORDON GROUP COMPANY		
C	.08	Redrawn in AutoCad.		NAME	DATE	TITLE		
				DRAWN	kwk	9.5.08	'N' CABLE PLUG -RG58/U Cables	
				APPR'VD			MATERIAL NOTED	
							FINISH NOTED	
				TOLERANCE UNLESS OTHERWISE SPECIFIED: 2 fig decimal +/- .004" 3 fig decimal +/- .002" Angles +/- 1 deg				DRAWING No. B30-008
								ISSUE C
								REF. DRGS. B30-009
								FIRST USE:

B30-008



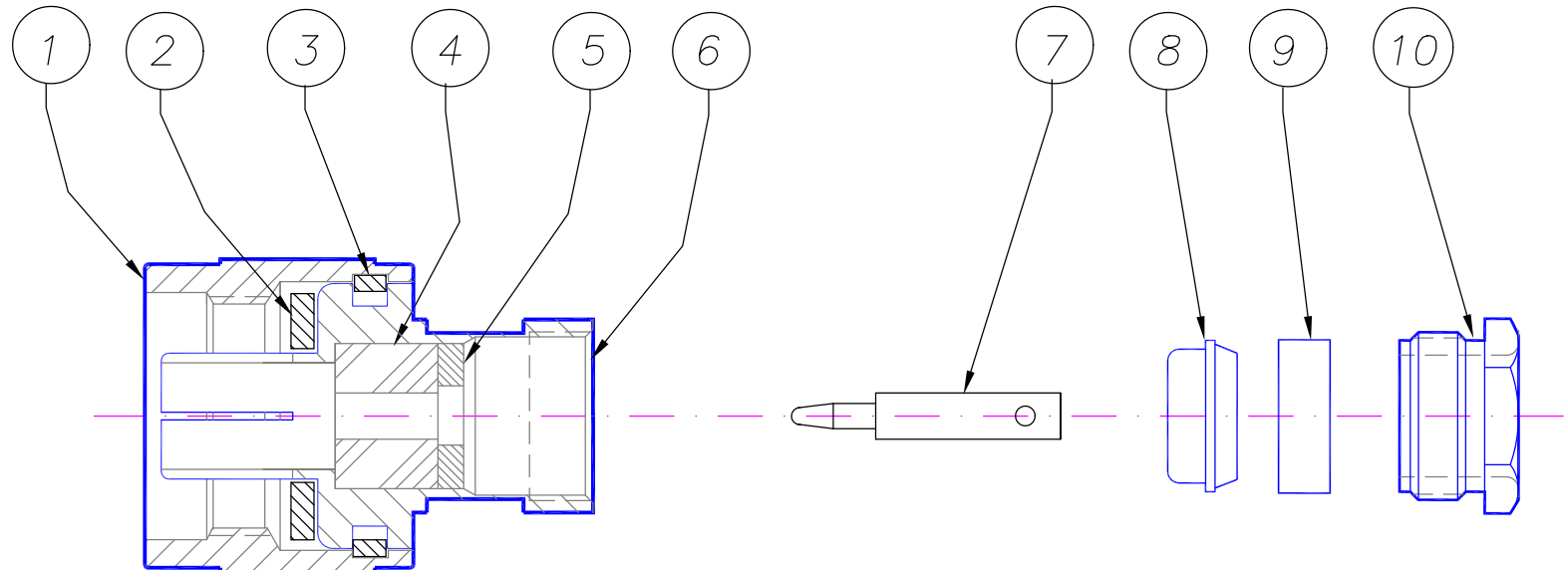
Centre Conductor

Braid & Dielectric

Pin is solder terminated flush with the Insulator (& Dielectric).

SUITABLE FOR CABLES - RG58, R141 & SIMILAR

Key	Part No.	DESCRIPTION	Qty.	Material	Finish
1	11888	SWIVEL NUT	1	Brass	Nickel Plate
2	11889	GASKET	1	Silicon Rubber	Red
3	11890	CIRCLIP	1	Brass	Natural
4	11891-1	INSULATOR	1	P.T.F.E.	Natural
5	11892-5	INS. RETAINING RING	1	Brass	Nickel Plate
6	11923	BODY	1	Brass	Nickel Plate
7	11894-4	PIN	1	Brass	Gold Plated
8	11925-1	COLLET	1	Brass	Nickel Plate
9	11926-1	SPLITTING GASKET	1	Silicon Rubber	Red
10	11832-1	CLAMP NUT	1	Brass	Nickel Plate



COPYRIGHT RESERVED: THIS DRAWING IS THE SOLE PROPERTY OF LINK CONNECTORS P/L & IS RETURNABLE ON REQUEST. IT IS TO BE TREATED AS CONFIDENTIAL, IS NOT TO BE COMMUNICATED TO ANY OTHER PERSON WITHOUT THE WRITTEN CONSENT OF LINK CONNECTORS & MAY BE USED FOR MANUFACTURE, ONLY WHEN ACCOMPANIED BY A WRITTEN ORDER.