

REV.	DATE	DETAILS	INIT.	NAME	DATE	LINK CONNECTORS P/L	A GORDON GROUP COMPANY					
B	11/3/93	RELEASED / RE-DRAWN -		DRAWN	KWK	11-3-93	'TNC' CABLE JACK - CRIMP TERMINATION					
B		ITEM # 1 WAS 12340, ITEM 3 - 12343-1	A	CHECKED			TITLE R6 58 CABLES					
				APPROVED	BNG	1/2/93	MATERIAL NOTED					
				MASTER SAMPLE LOCATION			FINISH NOTED					
GENERAL TOLERANCE UNLESS OTHERWISE SPECIFIED: Two Fig Decimal $\pm 0.010$ * Three Fig Decimal $\pm 0.005$ * Angles $\pm 1$ Degree							SCALE	1:1	2:1	4:1	5:1	10:1

B20-008

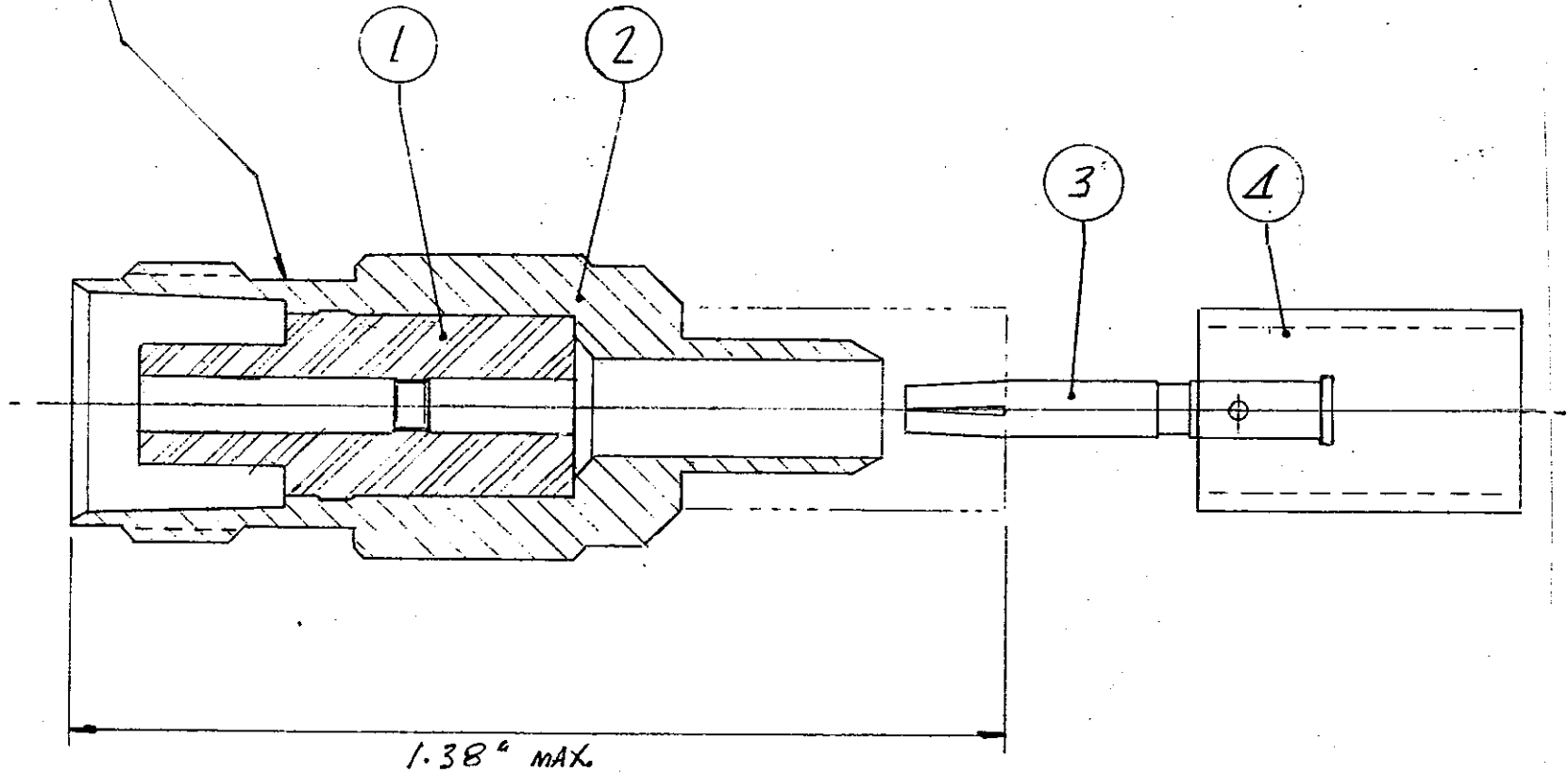
DRAWING NO. ISSUE B

REF. ORGS. B20-011

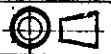
FIRST USE

KEY	PART NO	DESCRIPTION	QTY
1	12401	INSULATOR	1
2	12339-1	BODY - R658	1
3	12402-1	CONTACT - CRIMP / CAPTIVE R658	1
4	12090-1	CRIMP SLEEVE R658	1

BRAND - LINK B20-008  
TO READ FROM JACK END.



3rd ANGLE



1.38" MAX.

COPYRIGHT RESERVED: THIS DRAWING IS THE SOLE PROPERTY OF LINK CONNECTORS P/L AND IS RETURNABLE ON REQUEST. IS TO BE TREATED AS CONFIDENTIAL, IS NOT TO BE COMMUNICATED TO ANY OTHER PERSON WITHOUT THE WRITTEN CONSENT OF LINK CONNECTORS AND MAY BE USED FOR MANUFACTURE ONLY WHEN ACCOMPANIED BY A WRITTEN ORDER.